



Clatsop Spit: Recent Coastal Changes



Jonathan Allan

Oregon Department of Geology and Mineral Industries

Coastal Field Office

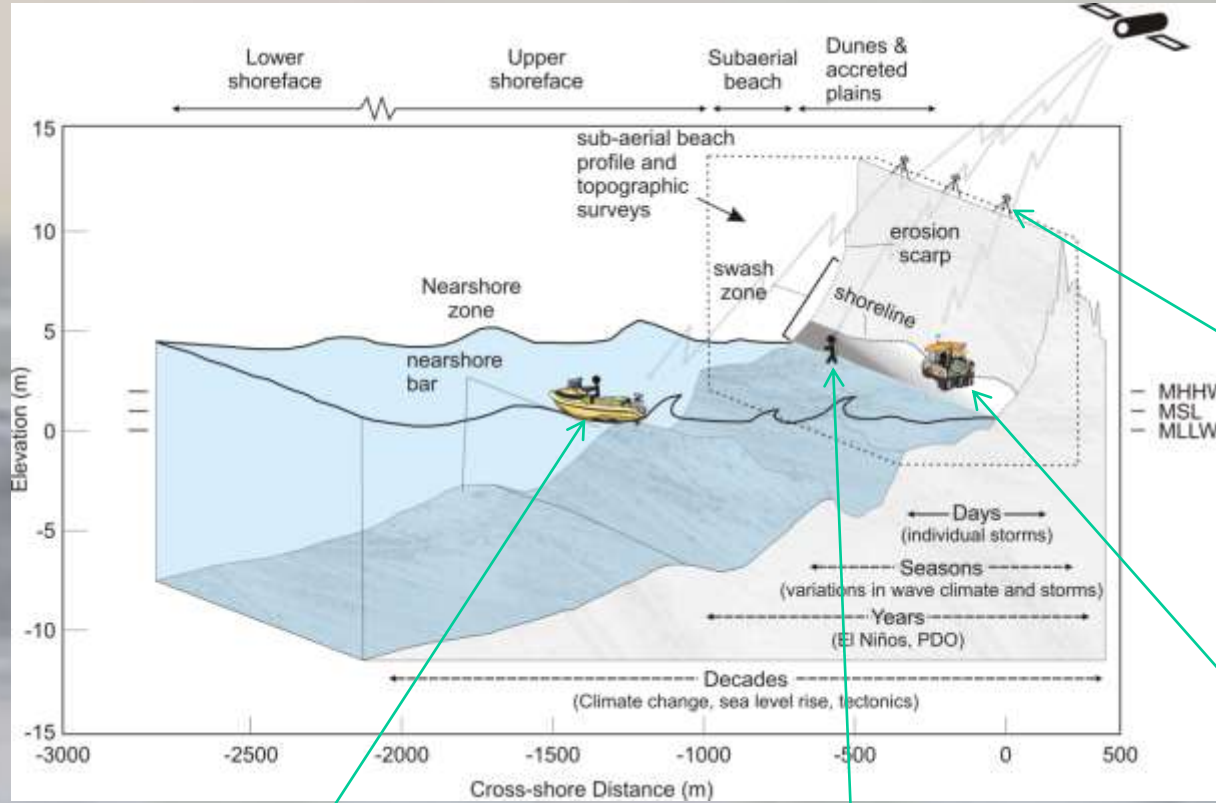
P.O. Box 1033,

Newport, OR97365



Clatsop Spit, 11 December 2015

OR/WA beach monitoring: Real-time Kinematic Differential Global Positioning System (RTK-DGPS)



GPS Base Station



Bathymetry



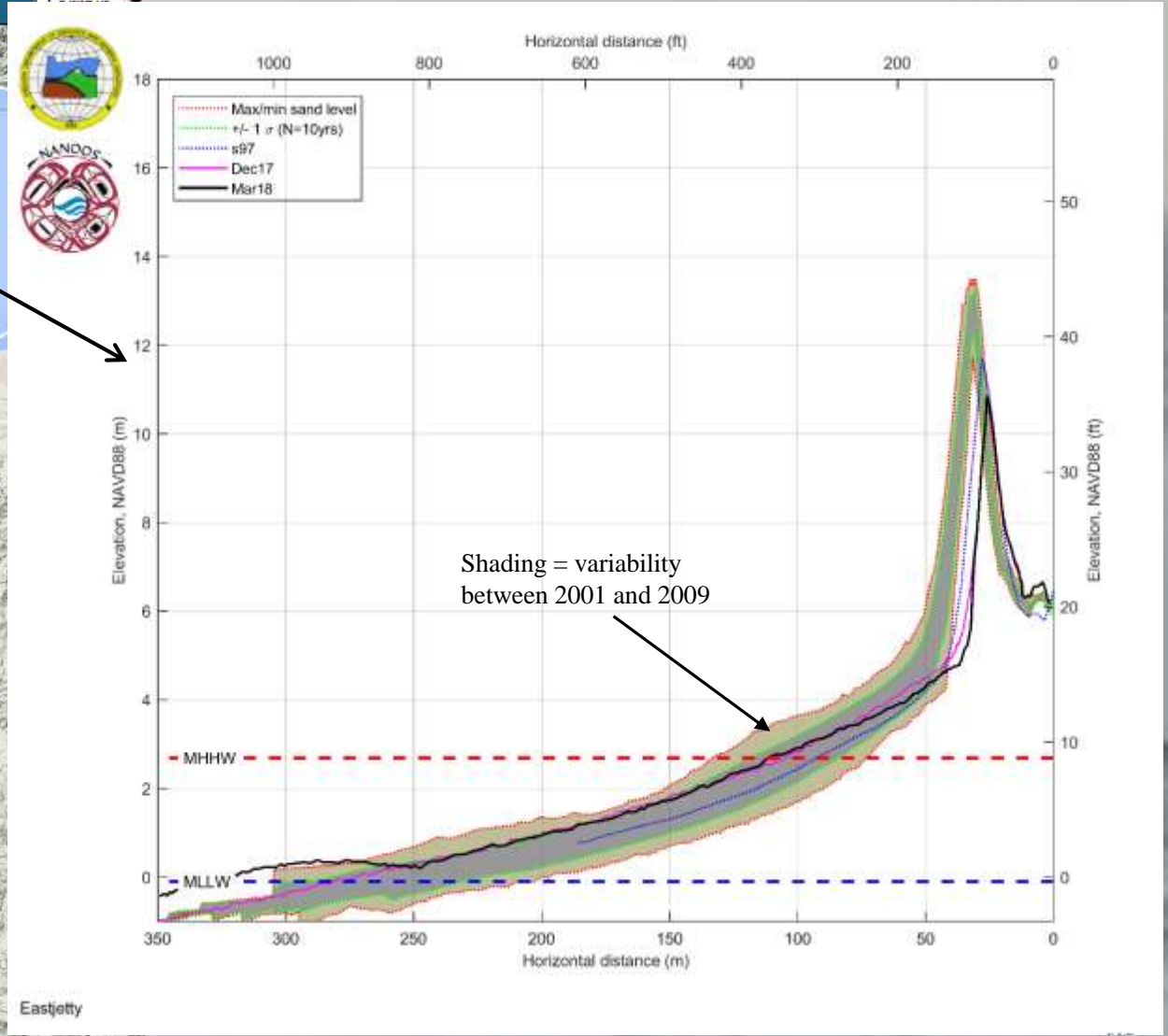
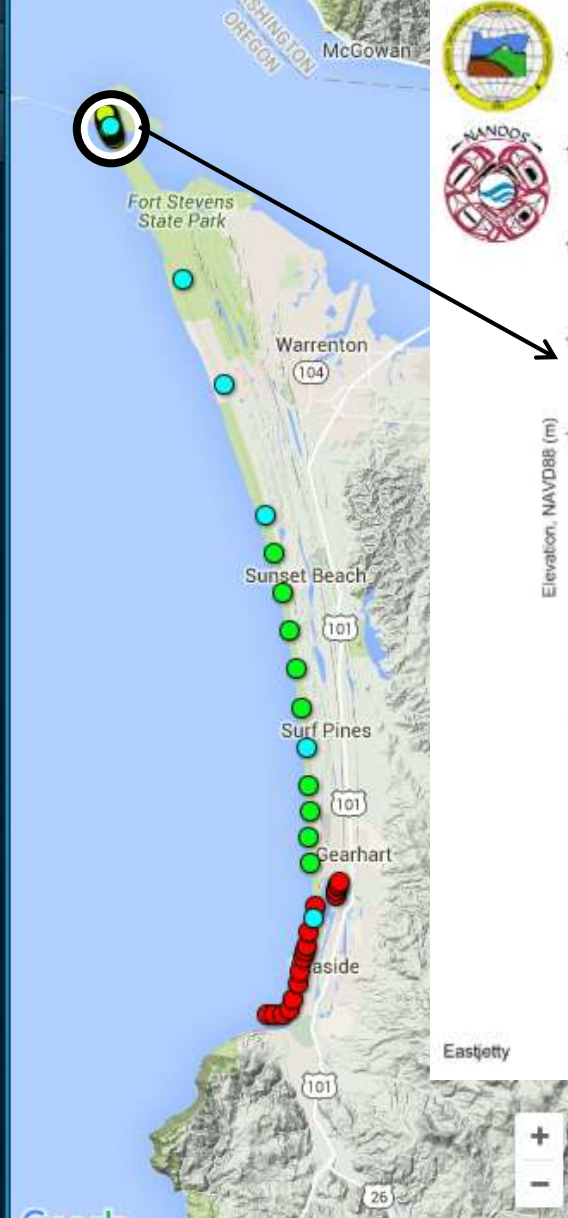
Cross-sections



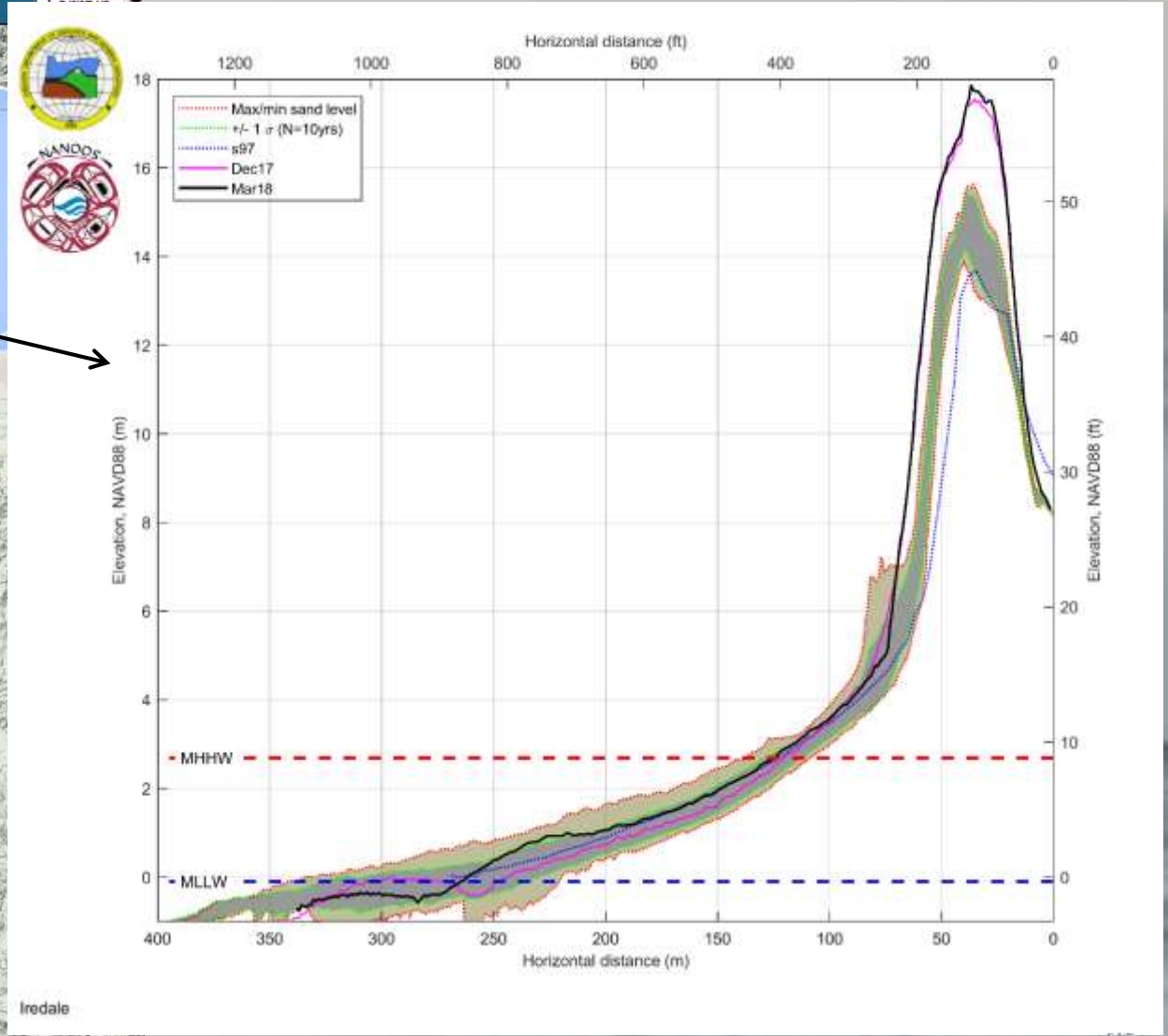
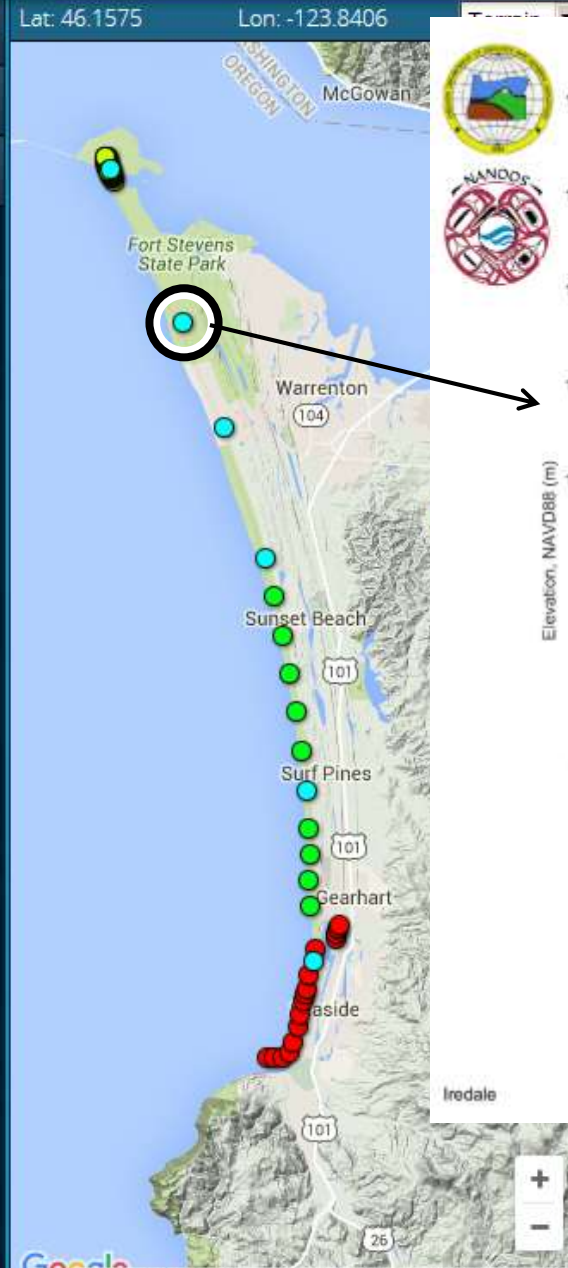
Topo surveying



Lat: 46.1575 Lon: -123.8406



- Regions
- Beaches
- Legend

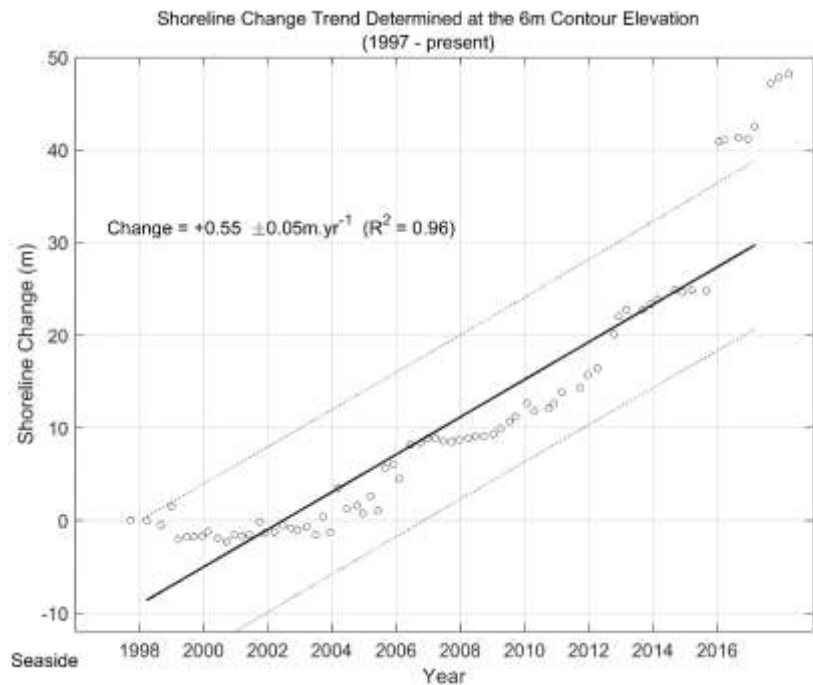
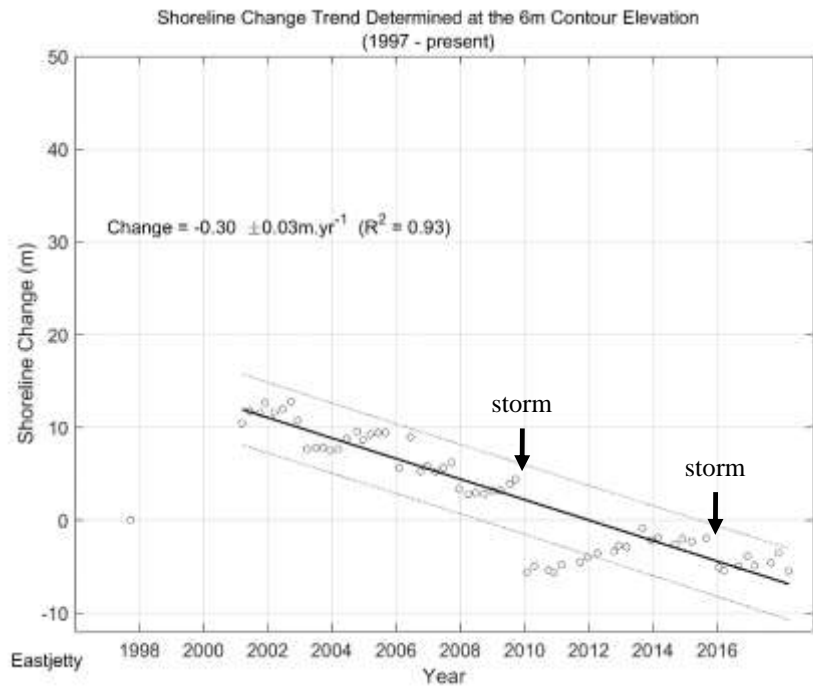
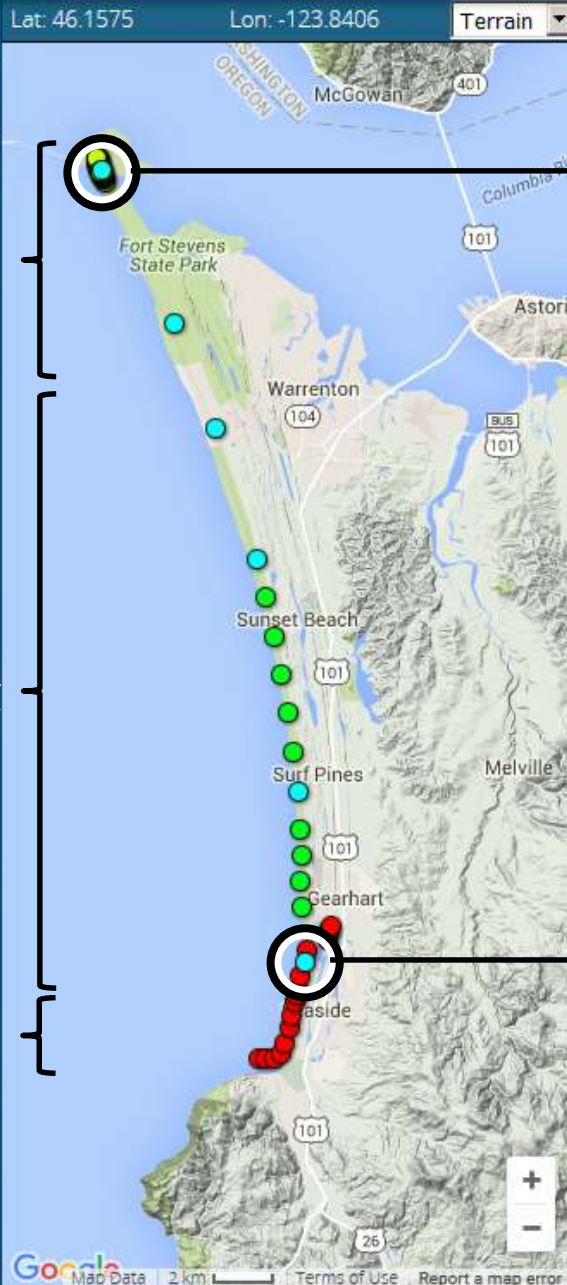


- Regions
- Beaches
- Legend

Eroding

Accreting

Stable



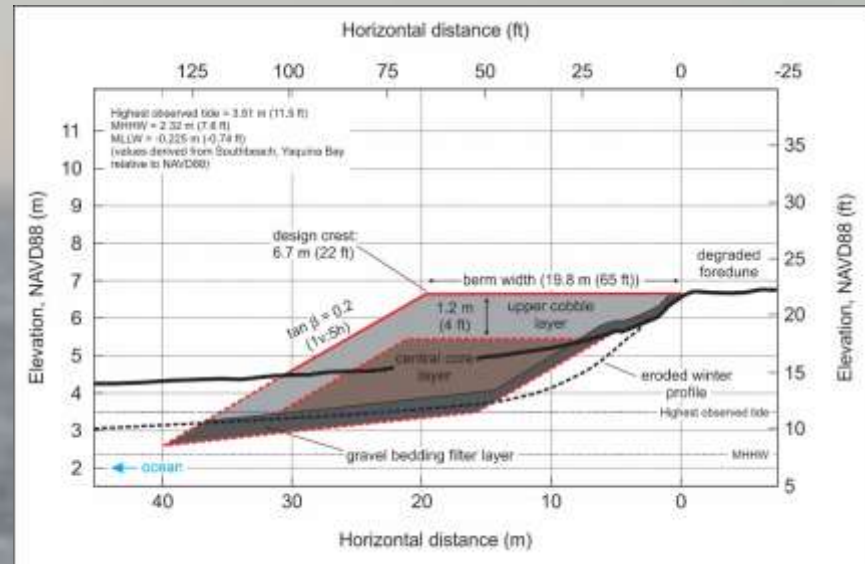
Clatsop Spit tip



January 2010



MONITORING THE RESPONSE AND EFFICACY OF A DYNAMIC REVETMENT CONSTRUCTED ADJACENT TO THE SOUTH COLUMBIA RIVER JETTY



October 2013



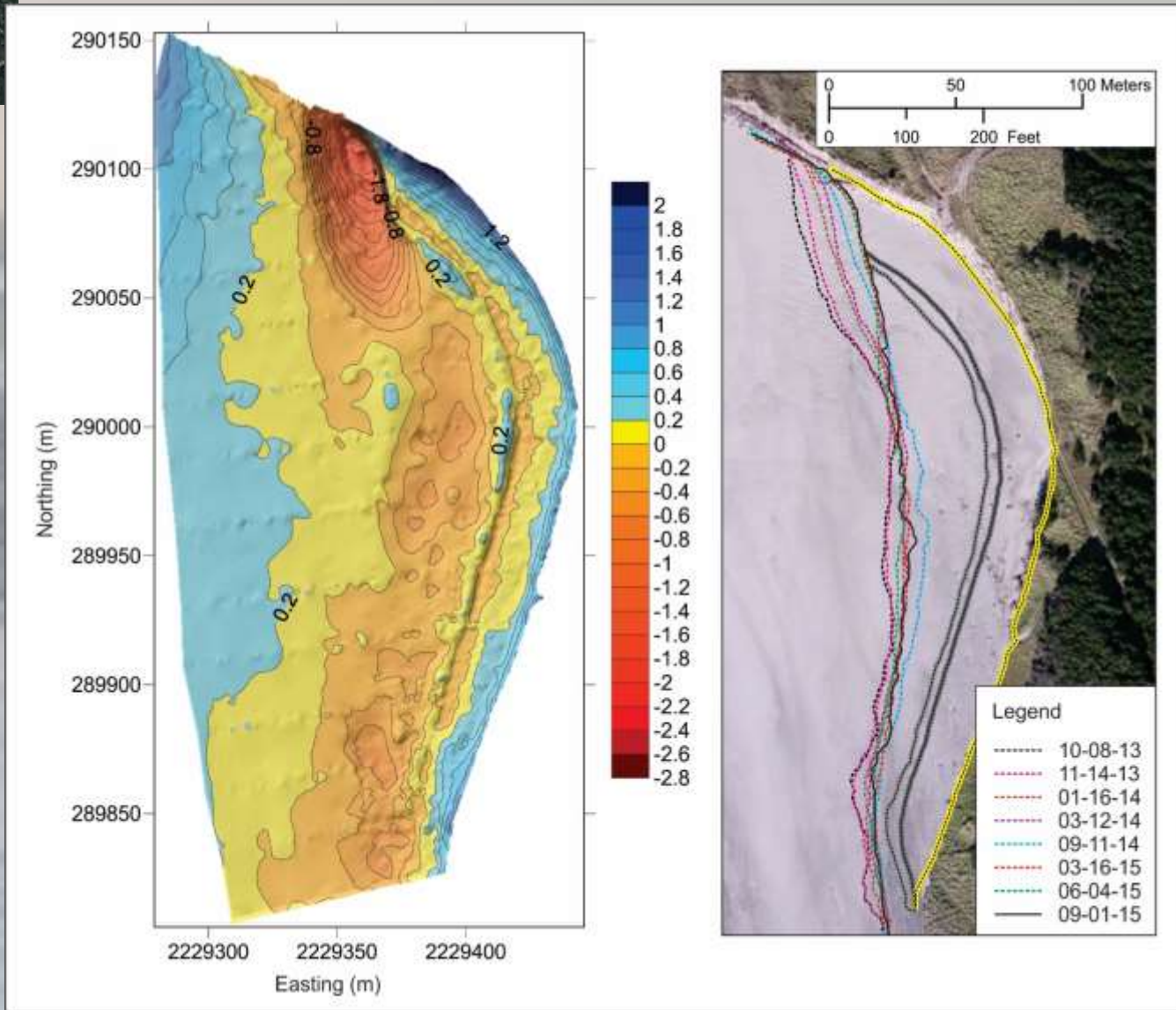
- Completed in October 2013
- Bedding layer, 1" rock (8,000 yd³);
- Central core, 1-8" angular cobble (18,000 yd³);
- Top layer (~4 ft thick), 1-8" rounded cobble (18,000 yd³);
- 65 ft wide at crest;
- Design crest = 22 ft;
- Sacrificial material adjacent to south jetty.

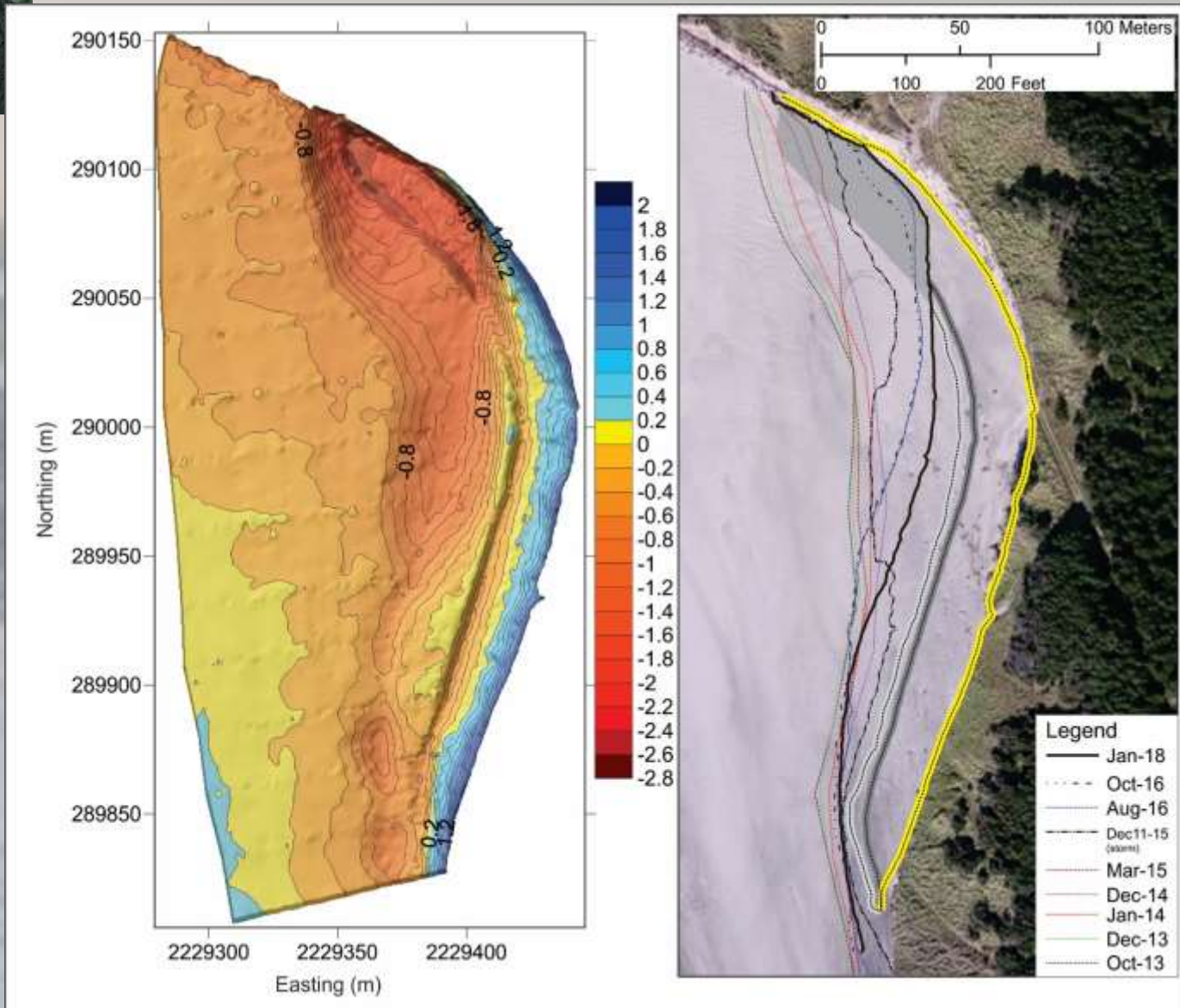




5/21/2018 Jonathan Allan, DOGAMI







[Apps](#) [Disclaimer](#) [Settings](#) [Log in](#) [v4.1](#) [Contact](#) [NANOOS](#)
CLIMATOLOGY Powered by VIZR

[ap](#) [Overview](#) [Help](#)

Regions Lat: 49.4824 Lon: -128.1665 Terrain

Sites
 Models
 Remote Sensing
 Legend

Vancouver
 Nanaimo
 Victoria

Google
 Map data ©2016 Google, INEGI 100 km Terms of Use

Wave height Anomalies

